

# Robovie(Daily life work robot)

(ATR Intelligent Robotics and Communication Laboratories · Osaka University)

Daily life work robot Robovie-II



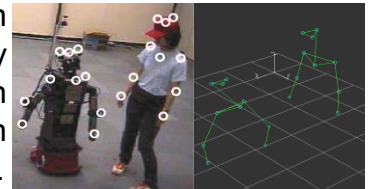
Robovie is a self-contained robot equipped with fundamental functionalities to communicate with humans. This robot was developed in ATR under an objective to provide services in the future daily life. We use this robot for basic studies in human robot interaction.

- Human-like physical behavior interaction as pointing
- Face recognition by using an Omni directional camera and eye cameras



## Analysis on physical behavior interaction

We analyze the interaction of physical behaviors between human and robot using a motion capturing system which provides highly accurate data. As the result we investigate the correlation between subjective impression and cooperative behaviors among the human and the robot, such as eye contact and entrainments of their figures.



## Formulation of wake-up call model for robot

During a conversation, we humans use reference terms such as “this” or “that”. The “wake-up call model” is a formulated form of the judging process to shepherd talkers attention on the objects which the robot trying to introduce. By analyzing human conversational behaviors we formulate three step wake-up call model using paintings and reference terms.



## Life like robot

Latest developments in psychology has revealed the following facts: “infants distinguish whether the object is animate or inanimate by seven features in their development period”. In the development of an animated robot, we design robot behaviors to fulfill these seven features.

